

DEVELOPING STRONG FUTURES

2012 ANNUAL REPORT CARD



A MESSAGE FROM CEO BROCK WOLFF



With the many recent breakthroughs in medical science, our understanding of how the human mind develops has led to heartening advancements in diagnosing and treating the children in our care. The challenges children and families face grow every year, but the incredible outcomes Orchard Place has been able to achieve with those who entrust us with their care is truly inspiring.

While the news seems filled with stories of teen suicides, senseless shootings, school violence, rising drop-out and juvenile crime rates, know that Orchard Place is on the front lines fighting those battles, working to lower, reverse and eradicate the negative. We're the ones working relentlessly in our efforts to prevent the negative and the ones helping to pick up the pieces when those bad things do happen.

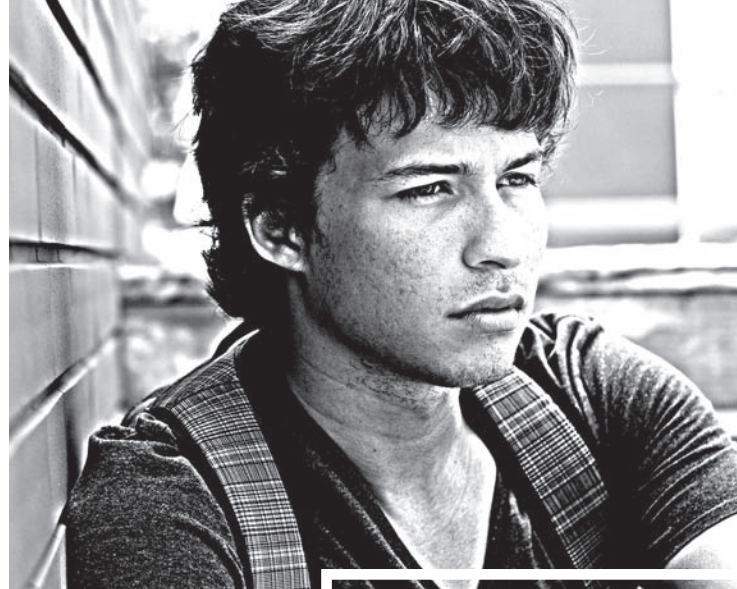
It's true that too many kids today are falling through the cracks, but we are fighting every day in the homes, the schools, the community and, with our advocacy, at the state level, to make sure as many at-risk children as possible receive the help needed to get on the right path.

Before closing, I welcome Mark Cowan, LISW, to our Orchard Place executive team. As the new vice president and administrator of the PACE Juvenile Center, he brings a clinical focus to PACE that will benefit all of our PACE clients.

Sincerely,

Brock Wolff, J.D. | Chief Executive Officer

United Way
of Central Iowa



HELPING IOWA'S CHILDREN SINCE 1886



THE MISSION OF ORCHARD PLACE

Orchard Place works closely with children and youth who have mental health and behavioral challenges. By interceding early with appropriate care, we develop stronger futures for our young clients.

To accomplish this goal, we operate Orchard Place/Child Guidance Center, an outpatient

community mental health center for children, adolescents and their families; Orchard Place Campus, a residential Psychiatric Medical Institute for Children; and Orchard Place/PACE Juvenile Center, providing academic instruction, substance abuse treatment, skill-building services and Juvenile Court follow-up.

VITAL STATISTICS

IN 2012, ORCHARD PLACE:

- Provided care to 7,608 Iowa children and youth
- Employed 326 staff members and utilized the services of more than 375 volunteers
- Operated on a budget of \$18.4 million, supported by a diverse funding base
- Limited management and general expenses to only 7% of budget
- Was accredited, audited and licensed by more than 10 entities, including the Joint Commission, meeting or exceeding more than 800 standards of operation, safety and management
- Benefited from the generosity of many individuals, businesses, civic groups, churches and foundations



ORCHARD PLACE/ CHILD GUIDANCE CENTER

Children need a safe and nurturing family to achieve healthy development. However, sometimes families have to deal with threats and challenges to their ability to provide a safe and nurturing environment. A variety of factors, including the economic downturn, have had a profound impact on families. Today, families are more strained and children often act out their stress behaviorally. Orchard Place/Child Guidance Center clinical staff members are working to alleviate the effect of parental and/or family stress and trauma on children's social and emotional development, behavior and well-being. Within a welcoming environment, Child Guidance Center clinicians engage the family in a strength-based treatment process that renews hope, resolves problems and improves resilience.

IN 2012, CHILD GUIDANCE CENTER:

- Provided care to 5,257 children and youth
- Conducted 53,864 outpatient treatment and psychiatric visits
- Provided 426 childhood mental health consultations for 50 early care and education programs
- Served 199 families through Functional Family Therapy
- Served 140 families through the System of Care program
- Trained 2,276 professionals on the effect of trauma on children, families and organizations through the Trauma Informed Care Project

OF THE CHILDREN COMPLETING TREATMENT:

- 93% receiving outpatient mental health services stabilized or improved overall functioning
- 95% of those age 6-18 receiving outpatient mental health services reduced their risk of harming themselves or others, and 95% stabilized or improved their behavior and their ability to function appropriately
- 86% of those age 2-5 with social or emotional concerns stabilized or improved from intake to discharge, and 97% with behavioral concerns stabilized or improved between intake and discharge

THROUGH THE CHILD CARE RESOURCE AND REFERRAL PROGRAM:

- Families were provided information on choosing quality child care through 5,342 referrals to various child care programs
- 2,208 on-site consultations were completed for child care programs
- Child care programs contacted the Child Care Resources and Referral program 2,271 times for technical assistance sessions
- 8,114 child care providers attended Child Care Resources training sessions



ORCHARD PLACE CAMPUS

When a child or adolescent's problems require more than outpatient treatment, they may be referred to Orchard Place Campus, home to our Psychiatric Medical Institute for Children, a temporary residence program of intensive treatment and supervision. Orchard Place Campus seeks to meet all of our 103 young clients' needs through individualized treatment as well as an accredited school, clinic, gym, playground and more. The goal is to minimize the disruption to their lives during treatment, getting them better and back to their families, friends and schools as quickly as possible.

**IN 2012, ORCHARD PLACE
CAMPUS HELPED 232 CHILDREN.
THE AVERAGE LENGTH OF
STAY WAS TEN MONTHS.**

PROGRESS THAT LASTS A LIFETIME:

- 95% of the children who received mental health services stabilized or improved overall functioning
- 94% of the children who received mental health services reduced their risk of harming themselves or others
- 97% of children discharged moved to a lower level of care and 89% were discharged to their parents or families

ORCHARD PLACE CAMPUS SCHOOL HELPS STUDENTS SUCCEED:*

- 100% of elementary students improved in math and 86% improved in reading
- 95% of middle school students improved in math and 82% improved in reading
- 91% of high school students improved in math and 86% improved in reading

*Students attending the school for four or more months.

ORCHARD PLACE/ PACE JUVENILE CENTER

While the services of our other two divisions are primarily psychiatric in nature, Orchard Place/PACE Juvenile Center focuses more on our clients' day-to-day lives and helps them build their skills to work through their many challenges. We intercede for schools and Juvenile Court Services in helping students alleviate behavior issues and accept responsibility for changing their behaviors. We offer youth the skills to cope in socially acceptable ways by working hand-in-hand with our mental health therapists. We treat our clients' substance abuse issues, hopefully to stop a lifetime of abuse.

With a background as an independently licensed social worker, Mark Cowan, the new vice president and administrator of PACE, brings a clinical focus to our program that will result in greater positive outcomes for our clients.

**IN 2012, PACE JUVENILE CENTER
SERVED 2,119 YOUTH AND FAMILIES.**

- 95% of the youth served remained in their home or community
- 94% were in school or had graduated at the time of their discharge
- PACE has school-based liaisons in six area high schools, working on behalf of Juvenile Court Services and the Des Moines Public Schools
- 393 youth received skill-building services from PACE case managers, working in conjunction with their therapists

**HAVE YOU REMEMBERED THE CHILDREN
OF ORCHARD PLACE IN YOUR WILL OR
OTHER ESTATE PLANS?**

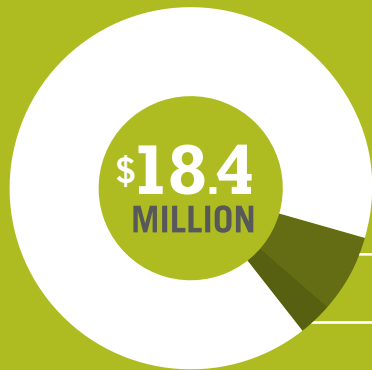
CONTACT US AT 515-287-9648 WITH QUESTIONS.



SURVEY RESULTS & FINANCIALS

1,283 CLIENTS, BOTH PARENTS AND CHILDREN, RETURNED OUR 2012 SURVEY. THE RESULTS ARE A TESTAMENT TO OUR STAFF.

- 95% agreed with the statement "I AM SATISFIED WITH THE SERVICES I RECEIVED."
- 95% agreed with "I FELT COMFORTABLE CALLING WITH QUESTIONS AND CONCERNS."
- 95% agreed with "I RECEIVED SERVICES THAT WERE HELPFUL."
- 97% agreed with "STAFF PROVIDED A SAFE ENVIRONMENT."
- 97% agreed with "I WAS TREATED WITH RESPECT."



ORCHARD PLACE AND OUR RELATED FOUNDATION HAD AN OPERATING BUDGET OF \$18.4 MILLION IN THE LAST FISCAL YEAR. OF THAT AMOUNT:

90% PROGRAM EXPENSES

7% MANAGEMENT AND GENERAL EXPENSES

3% FUNDRAISING AND MARKETING EXPENSES

56% Medicaid

15% Other State/Federal Contracts

11% Third Party and Private Pay

6% United Way of Central Iowa

6% Philanthropy/Other

3% Juvenile Court

2% Schools

1% Counties

THIS YEAR, 7,608 CHILDREN AND YOUTH WERE SERVED BY THESE RESOURCES

ORCHARD PLACE EXECUTIVE OFFICERS

CHIEF EXECUTIVE OFFICER Brock Wolff, J.D.
 CHIEF FINANCIAL OFFICER Val Saltsgaver, CPA
 VICE PRESIDENT, Development & Marketing Nancy Bobo, CFRE
 VICE PRESIDENT, Orchard Place/Child Guidance Center Dave Stout, LMSW
 VICE PRESIDENT, Orchard Place/PACE Juvenile Center Mark Cowan, LISW
 VICE PRESIDENT, Orchard Place Campus Tonnie Guagenti, LISW

FOUNDATION BOARD OF DIRECTORS

PRESIDENT Laura Martino
 VICE PRESIDENT Joe DeJong
 SECRETARY/TREASURER Rob Gavin

MEMBERS

TJ Amos	Andrew Herrera	John Schmidt
Hobie Bannister	Don Lyons	

ORCHARD PLACE BOARD OF DIRECTORS

PRESIDENT Christine Cownie
 VICE PRESIDENT Toby O'Berry
 SECRETARY/TREASURER Ben McLean

MEMBERS

Mike Bock	Betty Grundberg	Todd Millang
Neil Broderick	Reginald Jackson	Brenda Mouw
Johnny Danos	Mic Jurgens	Nancy Norman-Uhl
Connie Freeman	William Ketch	D. Bryan Shiffler
Mike C. Gartner	Jan Koder	
Dan Greteman	Mary Madison	

HONORARY BOARD OF DIRECTORS

Carleton D. Beh, Jr.	Barbara Gartner	Cynthia Rehm
Wesley Boldt	Ken Haynie	Wes Ritchie
Martha Bueneke	Richard Jacobson	Elizabeth J. Ruan
George Carpenter III	Catherine McGarvey	LuVern Shiffler
Patricia Crispin	Bonnie Percival	Charlotte Stickler



ADMINISTRATIVE OFFICE

2116 Grand Ave.
Des Moines, IA 50312
Phone: 515.246.3514
Fax: 515.246.3599

CHILD GUIDANCE CENTER

808 Fifth Ave.
Des Moines, IA 50309
Phone: 515.244.2267
Fax: 515.244.1922


PACE JUVENILE CENTER

620 Eighth St.
Des Moines, IA 50309
Phone: 515.697.5700
Fax: 515.697.5701

ORCHARD PLACE CAMPUS

925 S.W. Porter Ave.
Des Moines, IA 50315
Phone: 515.285.6781
Fax: 515.287.9695

ORCHARDPLACE.ORG

 **FIND US ON FACEBOOK**